

# SPRING 2020

Retail

## Availability Report

[www.naimidmichigan.com](http://www.naimidmichigan.com)

phone: 517-487-9222



*Greater Lansing and Surrounding Areas*

# Success starts with NAI

We optimize your retail assets through creative leasing plans, marketing campaigns and skilled negotiation strategies. Our professionals assure relationships with tenant brokers while sourcing prospects seeking relocation expansion.

When investing, our expertise gives you an advantage starting with site selection and acquisition. When your project is prime for disposition, we ensure a skilled process of financial modeling, underwriting, commercial expertise and negotiating skills to produce maximum results.

We are NAI Mid-Michigan. The one choice for all your commercial real estate services.



Marshall, MI

**106 Redfield Plaza**  
1,800 SF for Lease



Lansing, MI

**408-426 Elmwood Dr**  
1,310 - 3,300 SF for Lease



East Lansing, MI

**740 W Lake Lansing Rd, Ste 100**  
3,160 SF for Lease



Lansing, MI

**707 Brookside Drive**  
1,600 - 6,400 SF for Lease



East Lansing, MI

**1500 W Lake Lansing**  
2,300 SF for Lease



Lansing, MI

**8741 W Saginaw Hwy**  
3,900 SF for Lease



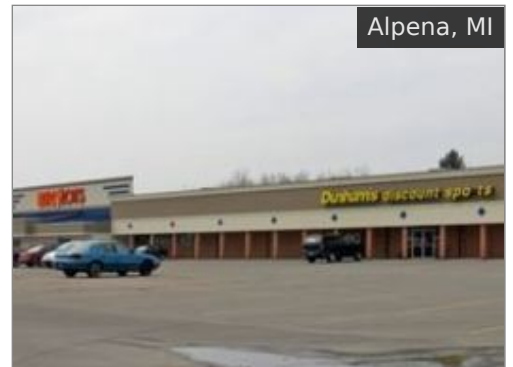
Lansing, MI

**401 N Clippert**  
1,635 SF for Lease



Mt Pleasant, MI

**600 W Pickard**  
20,000 SF for Lease



Alpena, MI

**2682 S. US 23**  
1,400 - 13,600 SF for Lease



Lansing, MI

**109 & 111 1/2 S Washington Sq**  
1,086 - 2,120 SF for Lease



Okemos, MI

**2361 W. Grand River Ave.**  
5,050 SF for Lease



Okemos, MI

**1800 W Grand River Ave**  
12,000 SF for Lease



East Lansing, MI

**3030-3038 E Lake Lansing Road**  
19,178 SF for Lease



Lansing, MI

**6250 W. Saginaw Hwy**  
3,066 SF for Lease



Lansing, MI

**3500 S Cedar St**  
2,339 SF for Lease



Lansing, MI

**4002 West Saginaw Hwy**  
6,300 - 13,500 SF for Lease



Saint Johns, MI

**2311 Old U.S. 27**  
700 - 3,375 SF for Lease



East Lansing, MI

**3498 E Lake Lansing Road**  
1,641 SF for Lease



East Lansing, MI

**500 Michigan Ave**  
1,800 SF for Lease



DeWitt, MI

**13109 Schavey Rd**  
1,654 - 3,580 SF for Lease



Holt, MI

**2030 & 2054 N Cedar St**  
14,000 SF for Lease



Lansing, MI

**2010 E Michigan Ave**  
1,500 - 3,005 SF for Lease



Lansing, MI

**644 Migaldi Lane**  
2,487 SF for Lease



Williamston, MI

**1232 E Grand River Ave**  
880 SF for Lease



Lansing, MI

**2024 E Michigan Ave**  
770 - 2,961 SF for Lease



Lansing, MI

**635 Waverly Rd**  
1,000 - 2,000 SF for Lease



Lansing, MI

**2702 S Cedar St**  
3,500 SF for Lease



Lansing, MI

**6145 W Saginaw**  
3,000 - 6,620 SF for Lease



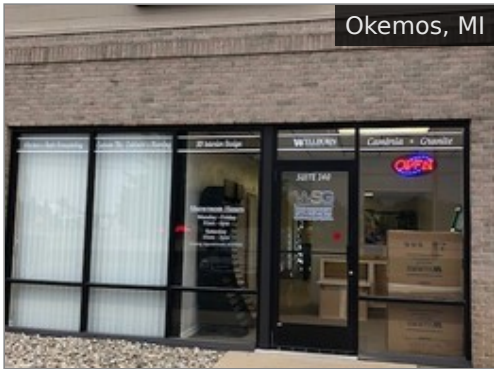
Jackson, MI

**1092 Jackson Crossing**  
310 - 24,891 SF for Lease



Okemos, MI

**1754 Central Park Drive**  
1,247 SF for Lease



Okemos, MI

**2803 Jolly Rd, Ste 140**  
2,842 SF for Lease



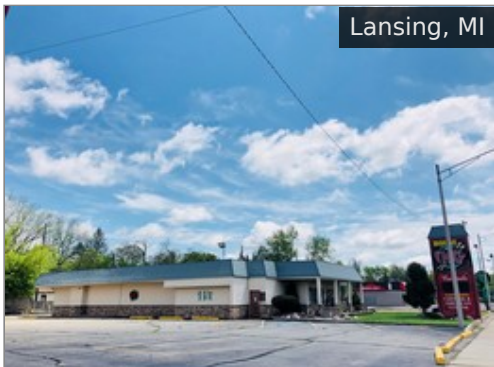
Jackson, MI

**1220 W Parnall**  
1,875 - 3,750 SF for Lease



Mt Pleasant, MI

**611 & 613 N Mission St**  
\$1,300,000



Lansing, MI

**4113 S Cedar St**  
\$275,000



Pottsville, MI

**127 W. Pearl Street**  
\$395,000



Lansing, MI

**2315 East Grand River Ave.**  
\$450,000



Okemos, MI

**662 W Grand River Ave**  
\$695,000



Lansing, MI

**5751 S Cedar Street**  
\$295,000



Lansing, MI

**902 E Cesar E Chavez**  
\$159,000



Lansing, MI

**5300 S. Cedar Street**  
\$499,900



Mason, MI

**117 S Cedar St**  
\$300,000



Okemos, MI

**2950 Jolly Road**  
\$799,000



Lansing, MI

**4200 W Saginaw**  
\$850,000



Lansing, MI

**808 Southland Ave**  
\$499,000



Holt, MI

**1916 Cedar Street**  
\$399,000



Lansing, MI

**Address Not Disclosed**  
\$549,000



Lansing, MI

**3812 S Martin Luther King Jr Bl**  
\$275,000



Brooklyn, MI

**145 Wamplers Lake Rd.**  
Off Market



Okemos, MI

**1259 E Grand River Ave**  
\$950,000



**Personal. Global. Professional.**

36 countries. 375 offices. 6,000 local market professionals.  
All working in unison to provide clients with exceptional solutions.

## Integrated Retail Services

Our retail experts provide a full spectrum of transaction expertise including acquisitions, dispositions, leases, subleases, lease renewals, lease expansions, land acquisitions and dispositions, retail and mixed-use developments, build-to-suits, and tax-free exchanges.

Our retail services include:

### **Investment Sales**

- Single-asset sales
- Portfolio dispositions

### **Corporate Services**

- Transaction Management
- Lease Administration
- Portfolio Management
- Project Management

### **Agency Leasing**

### **Tenant Representation**

### **Market Analytics**

### **Consulting**

### **Development Services**

### **Property Management**

### **Receivership**

### **Valuation & Advisory**

### **Marketing**

## Brokerage

---

**Dave Robinson, Associate Broker**  
Corporate Services Director

**Steve Slater, Associate Broker**  
Commercial Advisor

**Frank Woronoff, Associate Broker**  
Commercial Advisor  
Investment Services

**Ryan Shapiro**  
Commercial Advisor

**Jim Salkiewicz**  
Commercial Advisor

**Tanner Lundberg**  
Commercial Advisor

**Amanda Hopper**  
Commercial Advisor

**Gino Baldino**  
Commercial Advisor

**Ed Weaver**  
Commercial Advisor

**Ryan Lowe, CPA**  
Commercial/Business Advisor

**Jeff Shapiro GRI**  
Principal

**Nick Vlahakis**  
Principal

**Jim Vlahakis**  
Principal

**Diane Tooman**  
Business Operations Manager  
Brokerage

## Marketing

---

**Jessie Martens**  
Marketing Coordinator

**Julie Shelander**  
Administrative Assistant

**Pam Grable**  
Transaction Accounting

## Property Management

---

**Eric Chagnon**  
Business Operations Manager  
Property Management

**Jim Hoaglin**  
Property Manager

**Marc McHugh**  
Property Manager

**Megan Evans**  
Assistant Property Manager

**Rachael Hiveley**  
Assistant Property Manager

**Jeff Branch**  
Facilities Manager

**Josh Weaver**  
Facilities Manager

**Chad Jones**  
Facilities Manager

**Tim Miller**  
CEO

## Construction

---

**TMN BUILDERS, INC.**  
Resident Partner

**Rudy Hirt**  
President

**Chuck Weaver**  
Vice President

**Jason Weaver**  
Facilities Manager

**Bill Paterick**  
Brokerage Advisor  
Associate Broker

517-487-9222

[www.naimidmichigan.com](http://www.naimidmichigan.com)

**Contact an Expert Now!**

# **NAI**Mid-Michigan

Commercial Real Estate Services, Worldwide

---

2149 Jolly Road, Suite 200

Okemos, MI 48864

United States

Phone: 517-487-9222

[www.naimidmichigan.com](http://www.naimidmichigan.com)