

Land Availability Report

FEBRUARY 2026

www.naimidmichigan.com

517 - 487 - 9222



Greater Lansing and Surrounding Areas

Success starts with NAI

Throughout the course of each land acquisition or disposition assignment, our experts provide you with comprehensive information critical to decision making including the latest market intelligence, financing options, environmental compliance, entitlements, zoning, highest and best use considerations and more.

Our business relationships provide you with access to key partners in local government, economic development, financing and development as well as a network of investors to achieve your objectives.

We are NAI Mid-Michigan. The best choice for all your commercial real estate services.

Personal. Global. Professional.

36 countries. 375 offices. 6,000 local market professionals.
All working in unison to provide clients with exceptional solutions.

Integrated Land Services

Let us be your land experts and provide you with the latest intelligence, market data and insight to guide your investments and assist you in the evaluation and selection of real estate options that best support your business and investment goals

Our land services include:

- Land Assemblage
- Land Development
- Land Acquisitions and Dispositions
- Annexation and Zoning Consultation
- Site Selection
- Environmental Issues Consultation
- Demographic and Traffic Pattern Analysis
- Market Analysis and Feasibility Studies
- Strategic Real Estate Planning
- Marketing and Demographic Review
- Highest and Best Use Analysis



CAPAC

15004 Downey Rd.

0.6 Acres for Sale

\$59,000



EAST LANSING

2005 Abbot Rd.

0.33 Acres for Sale

Negotiable



EAST LANSING

7227 E. Saginaw Hwy.

33,697 SF for Sale

\$1,075,000

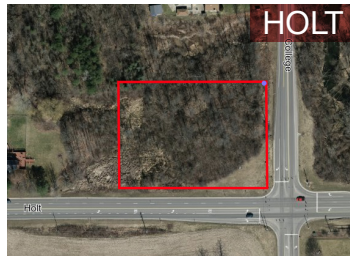


GRAND LEDGE

M-100/W. St. Joseph Hwy.

63.57 Acres for Sale

\$4,000,000

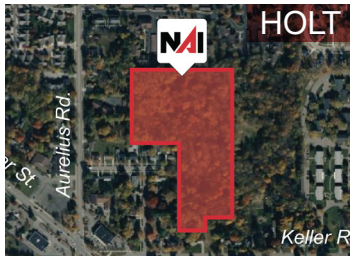


HOLT

College Rd.

2.75 Acres for Sale

\$169,000



HOLT

E. Norwood

12.9 Acres for Sale

\$99,900



JACKSON

S. Meridian Rd.

103 Acres for Sale

Negotiable



LANSING

Eaton Rapids Rd.

2.6 Acres for Sale

\$260,000



LANSING

Ena Dr.

4.98 Acres for Lease

Negotiable



LANSING

Grand River Ave.

90 Acres for Sale

\$4,320,000



LANSING

S. MLK Jr. Blvd.

1.2 Acres for Sale

\$169,000

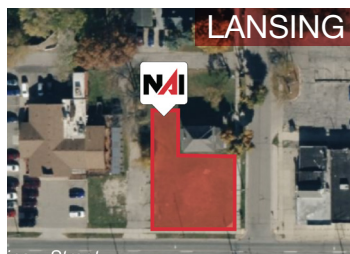


LANSING

W. Miller Rd.

11 Acres for Sale

\$249,000

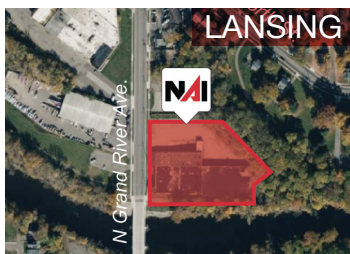


LANSING

1000 W. Saginaw St.

0.366 Acres for Sale

\$50,000



LANSING

1506 N. Grand River Ave.

2.94 Acres for Sale

Negotiable



LANSING

15891 S. U.S. 27

0.95 Acres for Sale

\$79,900



LANSING

West Park Development

4.03 Acres for Sale

\$895,000



OKEMOS

1410 Grand River Ave.

20.99 Acres for Sale

\$4,500,000



OKEMOS

3381 Hullet Rd.

0.71 Acres for Sale

\$157,000



OKEMOS

Atrium Dr.

18.64 Acres for Sale

\$145,490 - 546,678



ST. JOHNS

E. Townsend Rd.

1.57 Acres for Sale

\$349,000



WILLIAMSTON

101 N. Williamston Center Rd

2.35 Acres for Sale

\$249,900

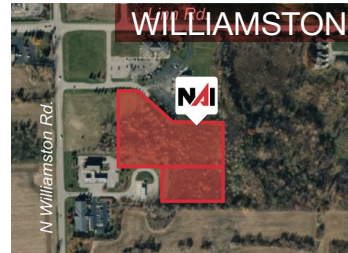


WILLIAMSTON

201 N. Williamston Center Rd.

2.2 Acres for Sale

\$295,000



WILLIAMSTON

Self Storage Site

8.3 Acres for Sale

\$349,900



WILLIAMSTON

Zimmer & E. Grand River

58,656 SF for Lease

\$1,700 - 3,000 per month (Ground)

Our Team

Brokerage

Jerome Abood
Principal, Managing Broker

Tim Miller
Chief Financial Officer

Nick Vlahakis
Associate Broker

Jim Vlahakis
Associate Broker

Dave Robinson
Associate Broker
Corporate Services Director

Steve Slater
Associate Broker
Commercial Advisor

Jeffrey Branch
Associate Broker

Scott Adams
Commercial Advisor

Gino Baldino
Commercial Advisor

Amanda Hopper
Commercial Advisor

Ryan Shapiro
Commercial Advisor

Ed Weaver
Commercial Advisor

Ryan Lowe, CPA
Commercial/Business Advisor

Administrative

Kelsi Inman
Property Marketing Specialist

Julie Shelander
Administrative Assistant

Property Management

David Turner
Director of Property Management

Megan Evans
Property Manager

Pam Grable
Assistant Property Manager

Jim Hoaglin
Property Accountant

Cheri Loudonbeck
Property Management Administrator

Maintenance

Dave Brand
Maintenance Technician

Rande Hansen
Maintenance Technician

Greg Mock
Maintenance Technician

517-487-9222

www.naimidmichigan.com

Contact an Expert Now!



2149 Jolly Road, Suite 200

Okemos, MI 48864

United States

Phone: 517-487-9222

www.naimidmichigan.com